



datainnovations.com

EP Evaluator – Managing Projects

Carol R. Lee

Data Innovations Implementation Consultant

EP Evaluator – Managing Projects

Definition of Project

Open a project

Create a new project

Inventory

Manage your projects

The Utilities \File Manager

Backing up a project

Project

- A Project is a Database folder designed to contain your collection of experiments:
 - Every experiment belongs to a project.
 - One project can contain multiple experiments in different statistical modules
 - Projects can only be opened in EE – but can be shared with other EE users.
- Project Names must be unique – a user defined 2 part name
 - EP Evaluator can group projects together under one group name called a Prefix.
 - The prefix serves as the group name and is separated from the unique project name by a “^”

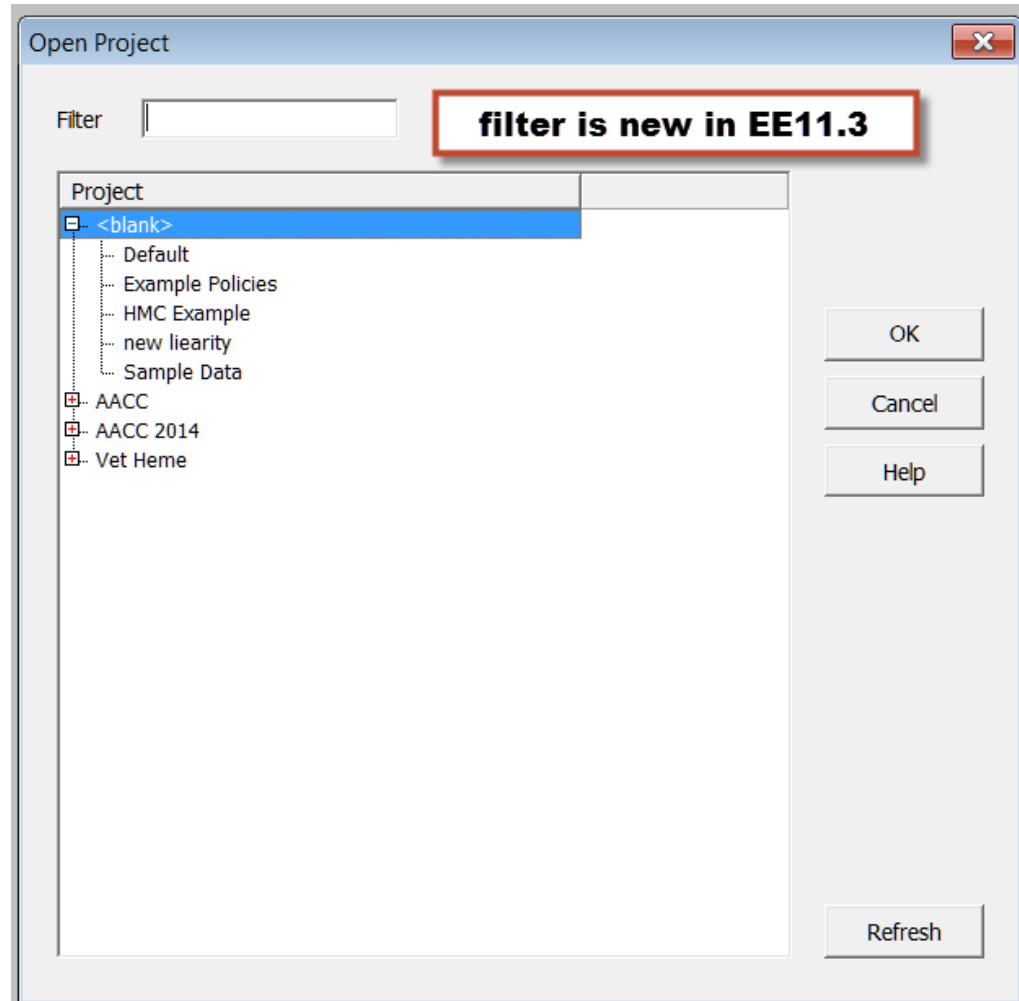
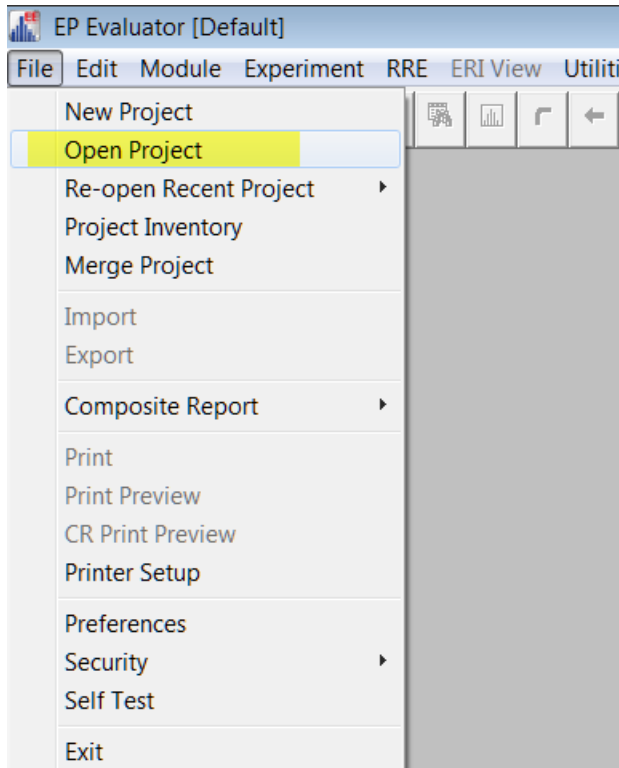
Examples of Project Names

- Prefix ^ unique name
 - Chem^Validation for city Med Center – June 2009
 - Validation ^Study for Eximer100 SN 1234 Nov 2015
 - Validation^ September 2015 CAP Inspection
 - [blank]^Sample Data
- more projects can be added under the same prefix
- Organized in the EE file menu by prefix

Project

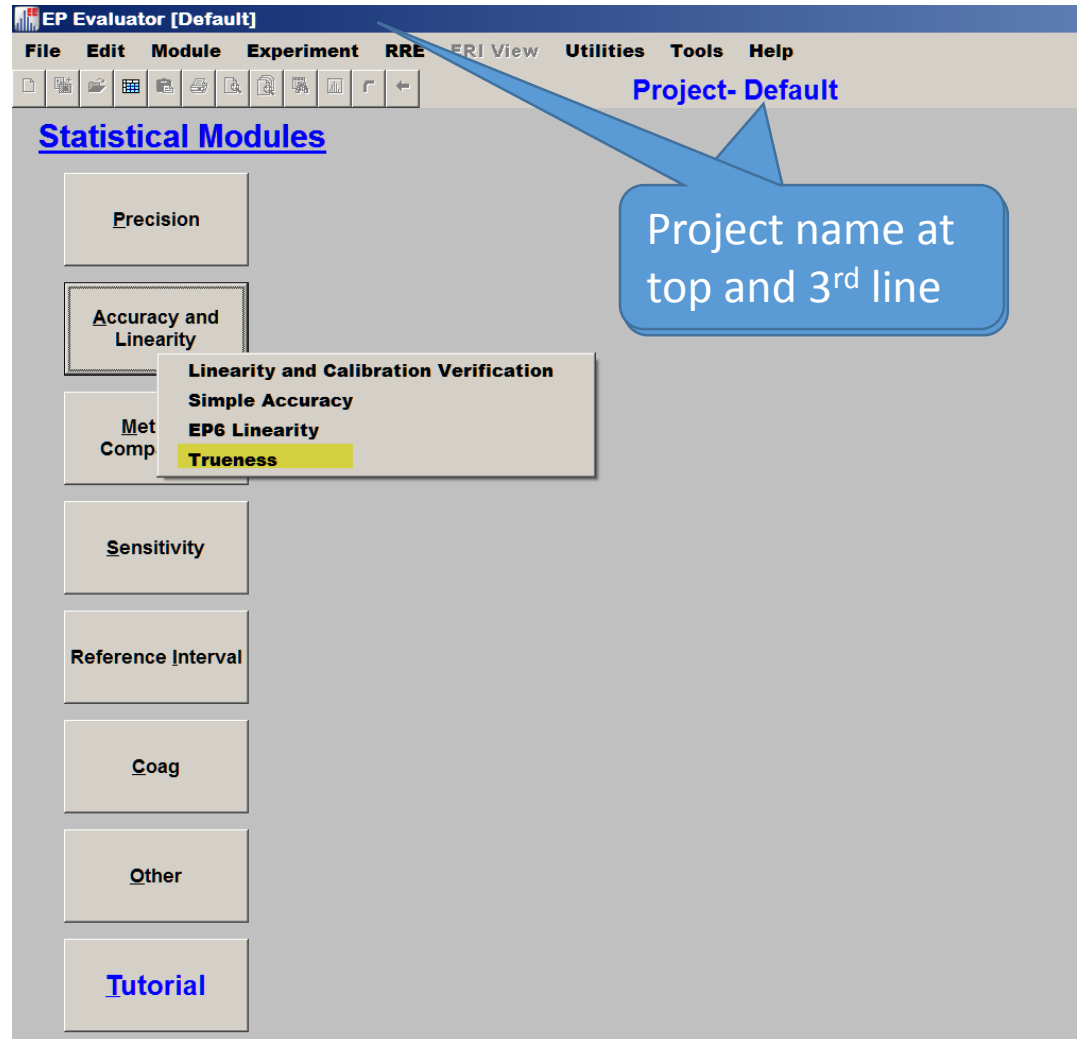
- EP Evaluator comes with:
 - 3 projects with sample data:
 - “Default”, “Sample Data” and “HMC example”
 - 2 projects with RRE examples
 - “Example Policies and “HMC Example”
- Unlimited Projects for standard or higher version users.
- CLIA version users can only use Default and Sample Data projects and not allowed to create new projects
- Projects are stored in folders on your network or hard drive.
 - Active projects: EE\data\studies
 - Archived projects: EE\data\backups
 - EE9 backup of Sample Data ~25 Jun 2015 13-46-49~001.zip

Open a Project



What Project Are You In?

- Main screen
- Project name on 1st and 3rd lines



Studies directory for Active projects

Computer > OS (C:) > EE11.3.22 > DATA > STUDIES

Search STUDIES

Organize Include in library Share with New folder

Name	Date modified	Type	Size
projdir.idx	11/17/2015 9:31 A...	IDX File	33 KB
projdir.dat	11/17/2015 9:31 A...	DAT File	4 KB
pathkey.txt	11/17/2015 9:30 A...	Text Document	1 KB
dbisam.lck	11/17/2015 9:30 A...	LCK File	1 KB
Sample Data	11/17/2015 9:30 A...	File folder	
MASTER	11/17/2015 9:30 A...	File folder	
HMC Example	11/17/2015 9:30 A...	File folder	
Default	11/17/2015 9:30 A...	File folder	
carol^New 3	11/17/2015 9:32 A...	File folder	

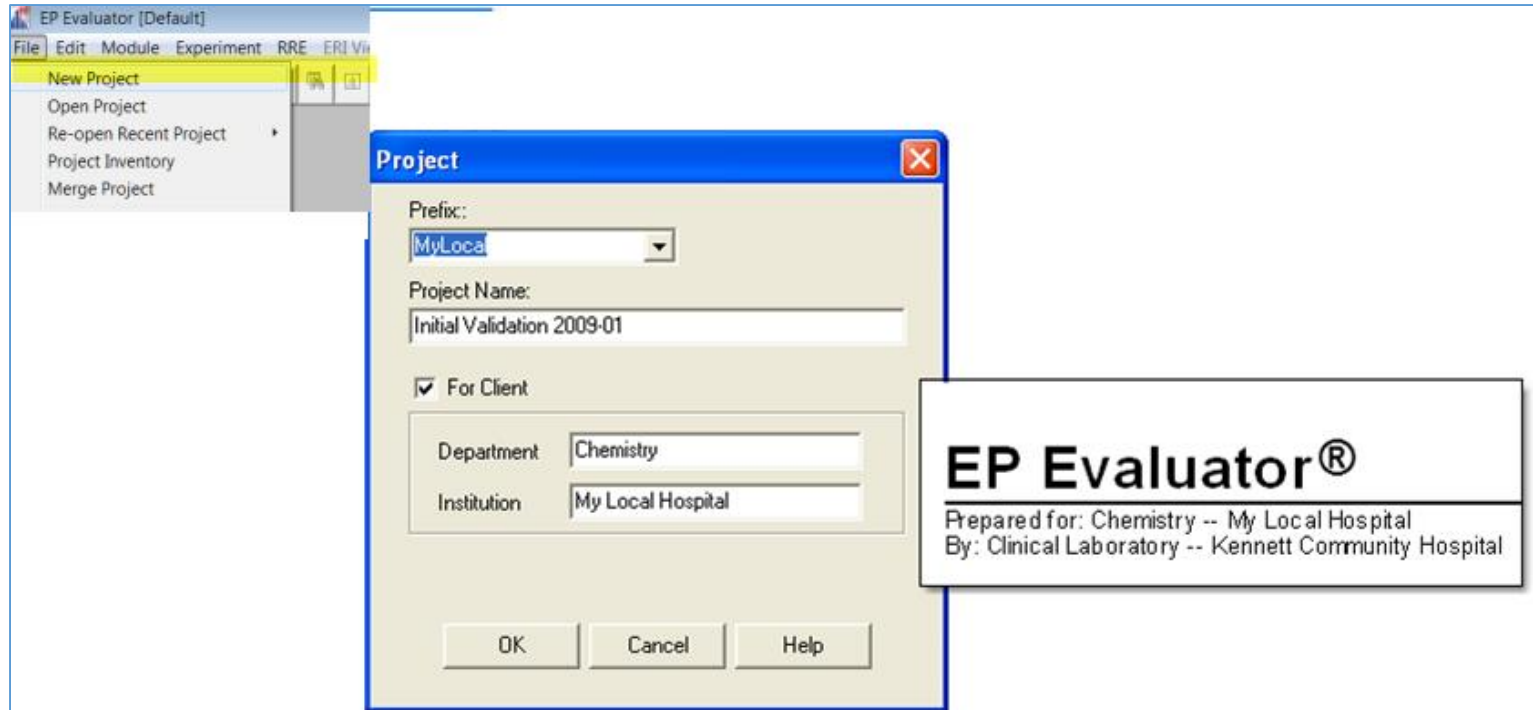
9 items



datainnovations.com

Creating a New Project

Creating a New Project



Naming your project:

- Prefix – 12 chars:
 - User’s initials or department name
- Project name - 80 char
 - Describe the activity
 - i.e., validations
 - Method comparison
 - Linearity
 - Include a date
- For Client (Optional)
- “Audit Trail” in professional version

Project

Prefix:
CHEM

Project Name:
Method comparison DXC 4562 to DXC 4875 July 2010

For Client

Department

Institution

No Audit Trail

OK Cancel Help

Inventory

Module	Experiment Description	status
SP	ANALYZER / BUN / Medium	●
CP	XYZ / GLUCOSE / HIGH	●
LIN	ASSAYER / AMMONIA maine st	●
SA	Eximer 250 / Glucose	●
EP6	Eximer 250 / CO2	●
AMC	KIPLING / XYZ / EXAMPLE	●
2IC	METH1 / METH2 / DEFAULT	●
EP9	KIPLING / XYZ / EXAMPLE	●
QMC	Chem Assay / Analyzer / Example	●
POC	xMeth / yMeth / GLU2	●
MIC	MIC-Q4-2000 / Glucose	●
LOB	IMMUNOASSAYER / ALT	○
LOQ	ImmunoAssayer / TSH	●
VRI	Analyzer / DHEAS	●
INR-MC	XMeth / Y / PT	○
INR-Geo	Assayer / Protime	●
INR-Ck	Eximer 400 / PT / XYZ-2002	●
AON	Assayer / Glucose	●
CO	Analyzer / HCG	●
IF	Analyzer / AST / High / Hemoglobin	●
PSTD	Eximer 500 / Glucose	●
EP10	BUN ANALYZER / BUN	●
STR	Eximer / ALT / 1234	○

27 modules, 60 experiments

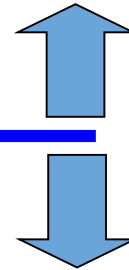


datainnovations.com

Managing Projects

Active Project Management Functions

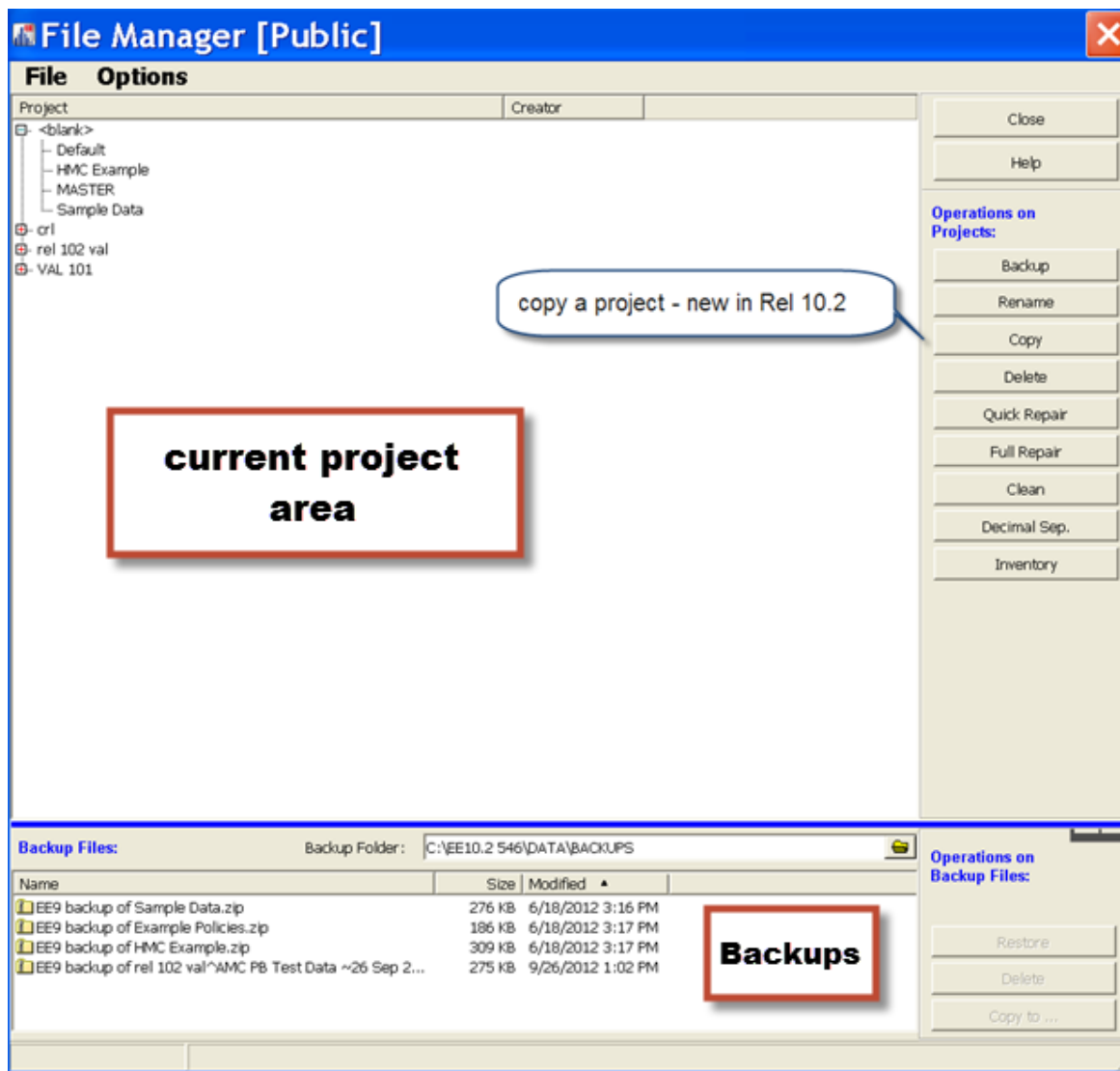
- Open/Reopen
- Create
- Inventory – current project
- Merge
- Rename
- Copy (clone)
- Delete
- Backup
- Restore
- Inventory (for any project)
- Repair (fix database errors)
- Move out of EP Evaluator® (e.g., offsite storage)



File menu

Utilities / File Manager

The File Manager (Utilities\File Manager)



Project Backups: A way to Share Data

- A EP Evaluator “project” contains all the data, policy definitions, experiments with data, and reports for a specific work assignment.
- Projects are portable only by using the backup function.
- To create a backup (archive) file for your project:
 - From the Main Statistical Module screen
 - Open Utilities\file Manager
 - Select the **Project Name** in the top half of the screen
 - Click on Backup to create a zipped file archived to date and time.
 - Default folder is \EE\data\backups
 - Can “copy to” any folder or travel drive. Email to your colleagues.
- Restore when needed in EP Evaluator on another computer.

The MASTER Project

- Created using Policy Definitions
 - Policy definitions from a current project can be copied to the Master project for future “new projects”
 - New Projects inherit policy definitions from the “Master Project”
 - For more information on Creating the MASTER Project, see the training session “RRE and Policy Defintions”
- Cannot be opened or viewed in the File Open menu
- Cannot be renamed, deleted,
- Contains no inventory
- Can be backed up and restored using the Utilities File Manager.

Where to find more information on Project Management

- EP Evaluator Users Manual
 - Chapter 3 – Common Operations
 - Chapter 39 – File Manager
- HELP Topics
 - Projects

For EE Support

- North America Telephone Support (802)-658-1955
– Northamerica-support@datainnovations.com
- Europe telephone support +32 2 332 24 13
– Europe-support@datainnovations.com
- Asia Telephone Support 852-2398-3182
– asia-support@datainnovations.com
- Latin America telephone support 55-11-38013283
– latinamerica-support@datainnovations.com

Additional Training & Services

- Visit the DI website for information on free training.
<http://datainnovations.com/services/training/ep-evaluator-training-programs>
 - Overview and Getting Started with EP Evaluator
 - Project Management
 - RRE and Policy Definitions
 - Hematology Method Comparison
 - Determining Performance standards
 - Inventory Management
- For more in-depth training or consultation
 - Contact the DI Sales organization for a quote
 - 802-658-2050
 - Northamerica-sales@datainnovations.com



datainnovations.com

Thank You!